

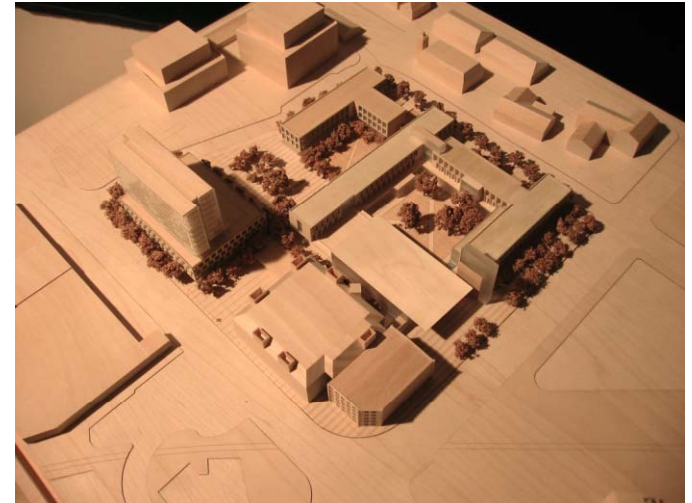
Centre for International Governance Innovation



Balsillie School of International Affairs Campus Master Plan

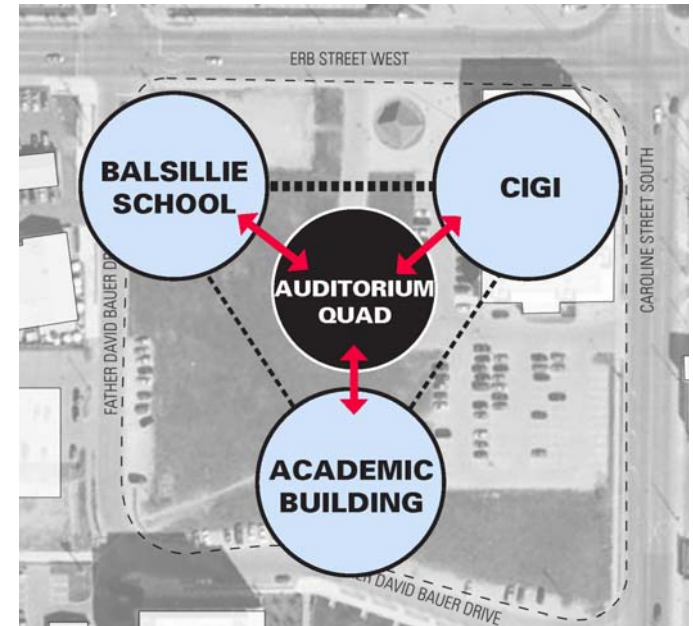
PURPOSE OF THE MASTER PLAN

- to provide direction for the redevelopment of this site
- to provide for the integration of the academic campus into the Uptown Waterloo neighbourhood
- to assist project designers, review agencies and City Departments in the development review process
- to satisfy contractual obligations with the City of Waterloo



MASTER PLAN VISION

- campus of buildings and public spaces that create an inspirational learning, teaching and research environment
- integrated with Uptown Waterloo
- respectful of site heritage
- vibrant, active, flexible academic space
- highest quality urban, architectural design
- sustainable building, site design
- mixed use nature



CONTEXT



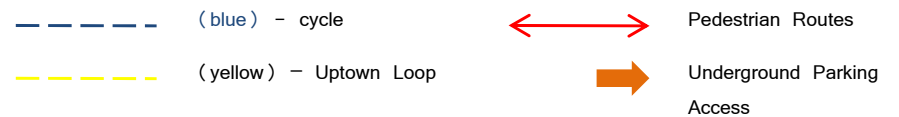
CAMPUS DESIGN

- linked pedestrian scaled buildings
- centred on quadrangle for academic reflection and inspiration
- pathways and courtyards
- integrated with CIGI
- phased parking
- completion of Father David Bauer Drive
- other streetscape improvements to Erb and Caroline Streets



CIRCULATION

- pedestrian routes through the campus connecting to City systems
- sidewalks and bike lanes on FDB Drive
- vehicular access from FDB Drive
- service court on Caroline Street
- Iron Horse Trail improvements on Caroline Street through City redesign

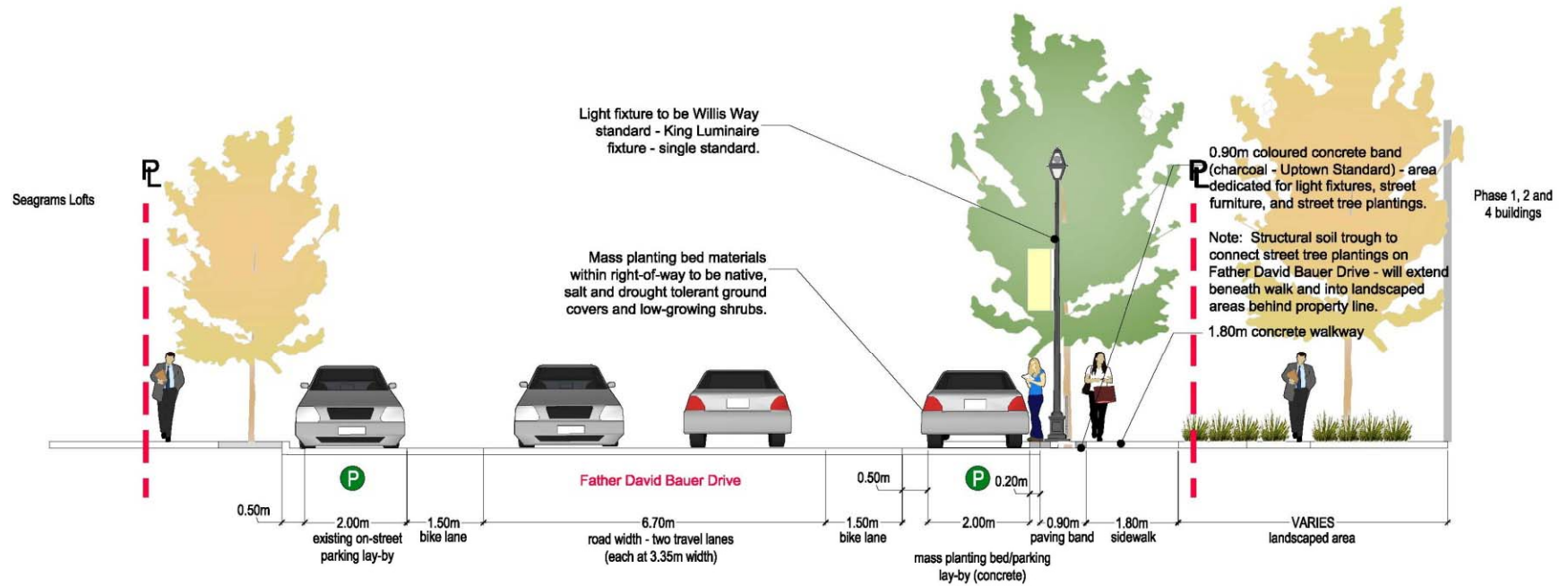


PUBLIC SPACES & LANDSCAPE DESIGN

- centered on academic quadrangle
- inviting and integrated campus edges
- internal public pathways and courtyards
- green roofs/terraces



FATHER DAVID BAUER DRIVE



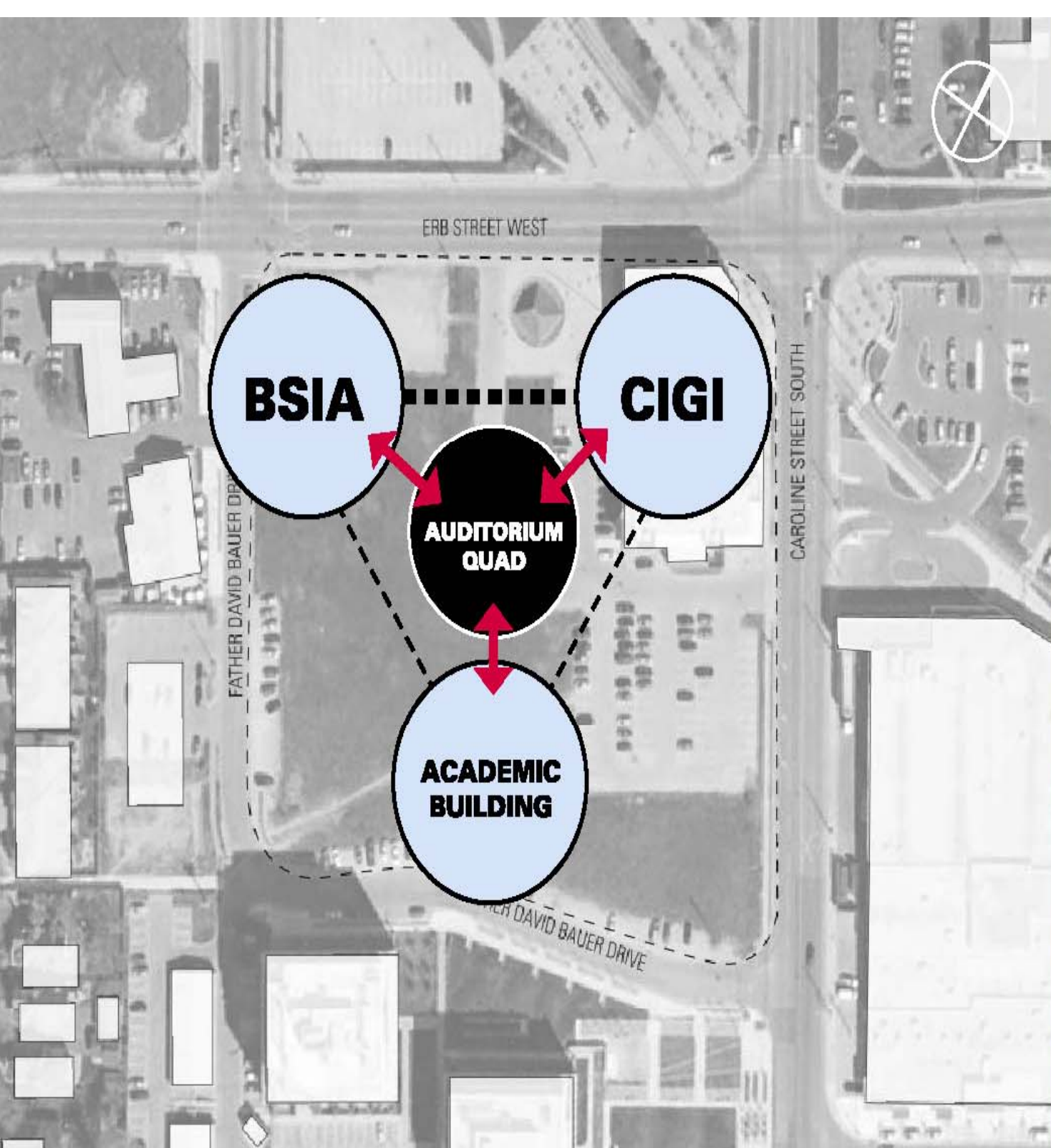
- complete FDB Drive
- on-street parking, bike lanes, sidewalks and street trees

SUSTAINABILITY

- minimize energy, water use
- possible green roofs/terraces
- promote travel alternatives to the automobile







Commitment to Excellence



CONCEPT DEVELOPMENT PLAN PHASE 1_BALSILLIE SCHOOL PHASE 2_ ACADEMIC BUILDING

BALSILLIE SCHOOL OF INTERNATIONAL AFFAIRS
Waterloo, Ontario

SITE STATISTICS

Site Area: approx. 2.05ha

CIGI (EXISTING BUILDING)

Floor Area: 2 787sq.m. (30,000sq.ft.)
3 parking spaces per 100 m²
90 parking spaces

BALSILLIE SCHOOL OF INTERNATIONAL AFFAIRS

Floor Area: 5 039sq.m. (65,000sq.ft.)
1 parking space per 2 employees
1 parking space per 10 students
38 spaces

ACADEMIC BUILDING

Floor Area: 3 251sq.m. (35,000sq.ft.)
parking pro rated from Balsillie program
20 spaces

ACADEMIC EXPANSION

Floor Area: 3 251 sq.m. (35,000sq.ft.)
parking pro rated from Balsillie program
20 spaces



07 JANUARY 2009
1:250



KPMB

Kuwabara Payne McKenna Blumberg Architects

322 King Street West
Toronto, Ontario
M5V 1J2
tel (416) 977-5104
fax (416) 588-8840

CONCEPT DEVELOPMENT PLAN PHASE 3 MIXED USE EXPANSION

BALSILLIE SCHOOL OF INTERNATIONAL AFFAIRS
Waterloo, Ontario

SITE STATISTICS

Site Area: approx. 2.05ha

CIGI (EXISTING BUILDING)

Floor Area: 2 787sq.m. (30,000sq.ft.)
3 parking spaces per 100 m²
90 parking spaces

BALSILLIE SCHOOL OF INTERNATIONAL AFFAIRS

Floor Area: 5 039sq.m. (65,000sq.ft.)
1 parking space per 2 employees
1 parking space per 10 students
38 spaces

ACADEMIC BUILDING

Floor Area: 3 251sq.m. (35,000sq.ft.)
parking pro rated from Balsillie program
20 spaces

ACADEMIC EXPANSION

Floor Area: 3 251 sq.m. (35,000sq.ft.)
parking pro rated from Balsillie program
20 spaces

MIXED USE EXPANSION

Floor Area Podium: 1 161sq.m. (12,500sq.ft.)
7 parking spaces
Floor Area Flexible Office - Residential: 6 780sq.m.
(73,000sq.ft.)
72 parking spaces
academic parking pro rated from Balsillie program
1 parking space per residential unit
79 spaces

07 JANUARY 2009
1:250



KPMB

Kuwabara Payne McKenna Blumberg Architects

322 King Street West
Toronto, Ontario
MSV 1J2
tel (416) 977-5104
fax (416) 598-9840



CONCEPT DEVELOPMENT PLAN MASTER PLAN

BALSILLIE SCHOOL OF INTERNATIONAL AFFAIRS
Waterloo, Ontario

SITE STATISTICS

Site Area: approx. 2.05ha

CIGI (EXISTING BUILDING)

Floor Area: 2 787sq.m. (30,000sq.ft.)
3 parking spaces per 100 m²
90 parking spaces

BALSILLIE SCHOOL OF INTERNATIONAL AFFAIRS

Floor Area: 5 039sq.m. (65,000sq.ft.)
1 parking space per 2 employees
1 parking space per 10 students
38 spaces

ACADEMIC BUILDING

Floor Area: 3 251sq.m. (35,000sq.ft.)
parking pro rated from Balsillie program
20 spaces

ACADEMIC EXPANSION

Floor Area: 3 251 sq.m. (35,000sq.ft.)
parking pro rated from Balsillie program
20 spaces

MIXED USE EXPANSION

Floor Area Podium: 1 161sq.m. (12,500sq.ft.)
7 parking spaces
Floor Area Flexible Office - Residential: 6 780sq.m.
(73,000sq.ft.)
72 parking spaces
academic parking pro rated from Balsillie program
1 parking space per residential unit
79 spaces



07 JANUARY 2009

1:250



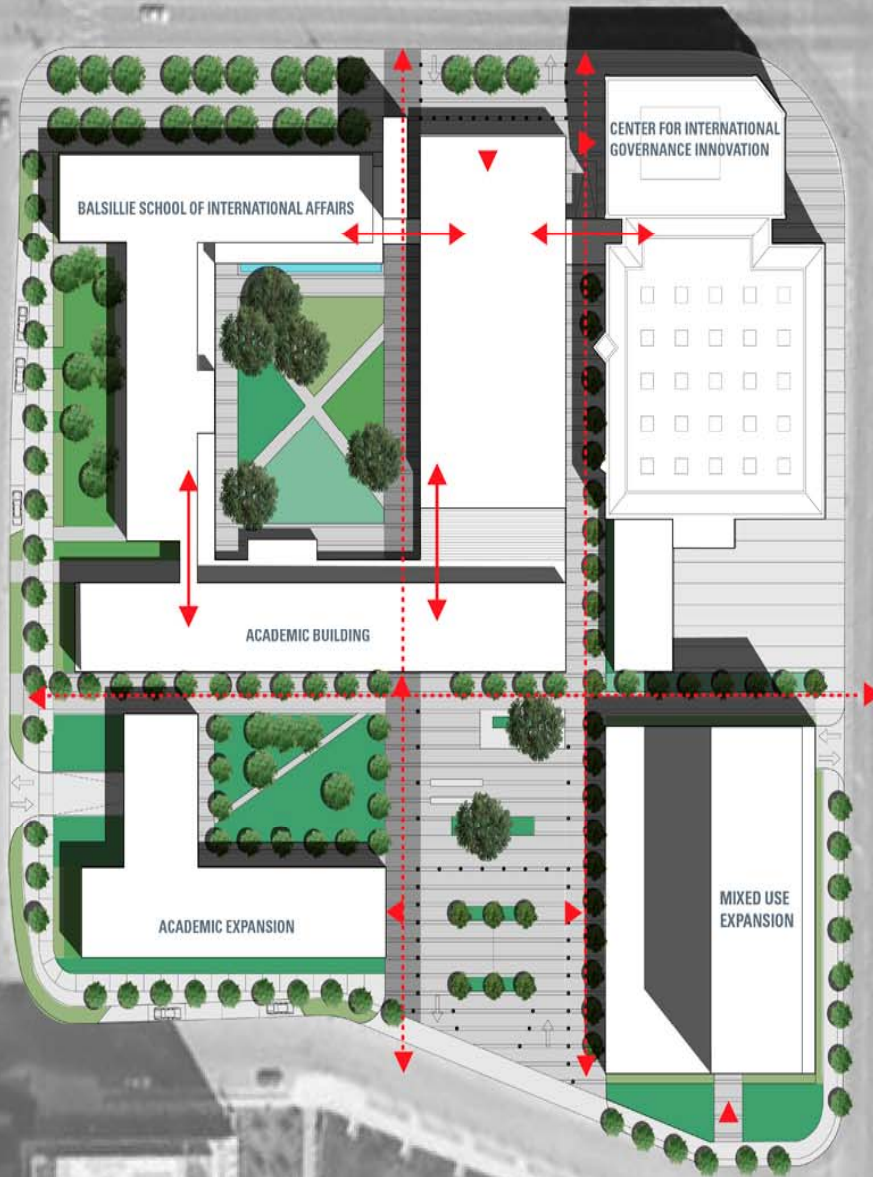
KPMB

Kuwabara Payne McKenna Blumberg Architects

322 King Street West
Toronto, Ontario
M5V 1J2
tel: (416) 977-5104
fax: (416) 598-9840

PEDESTRIAN PATHWAYS, ENTRANCES AND VIEW CORRIDORS

BALSILLIE SCHOOL OF INTERNATIONAL AFFAIRS
Waterloo, Ontario

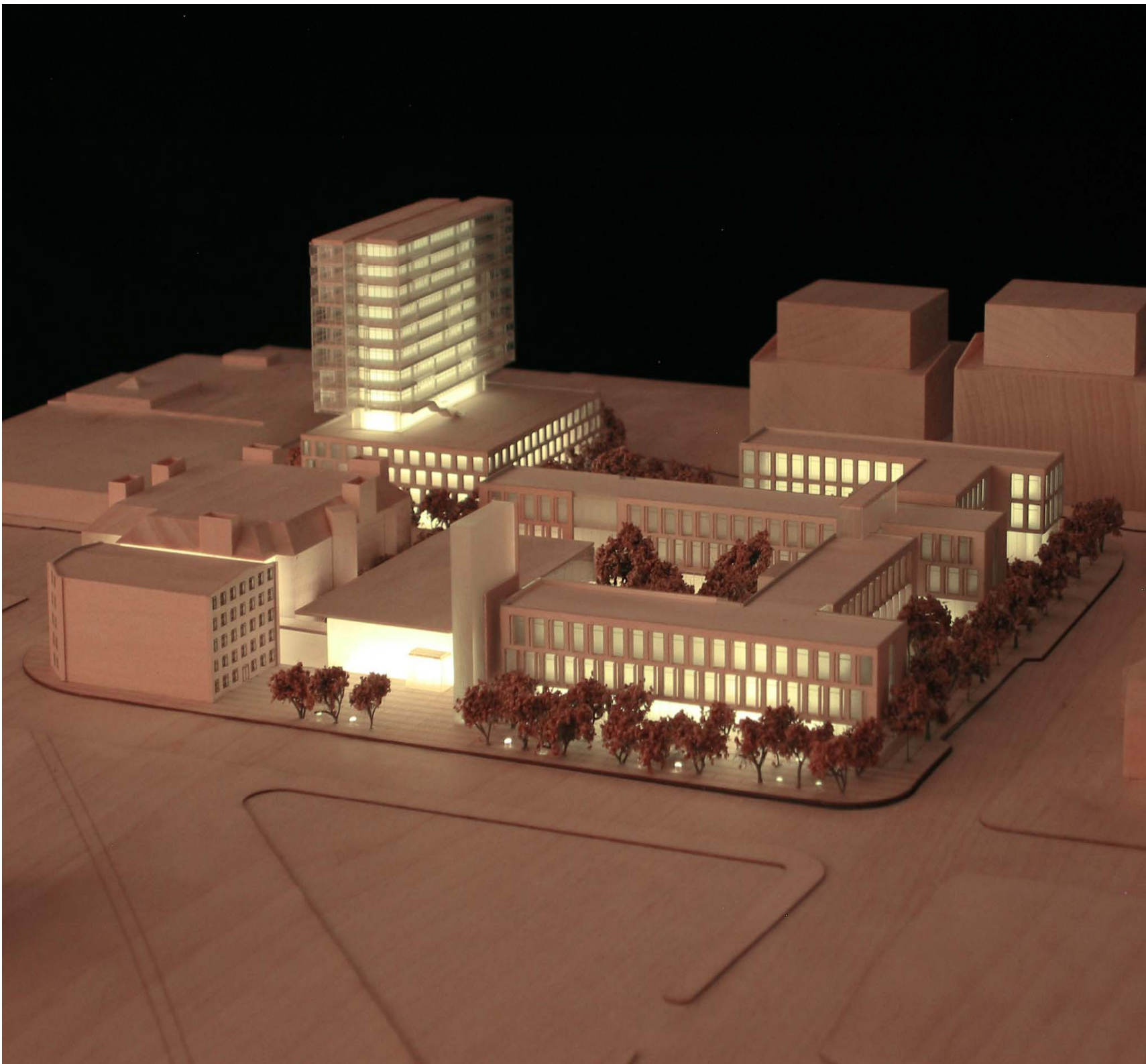


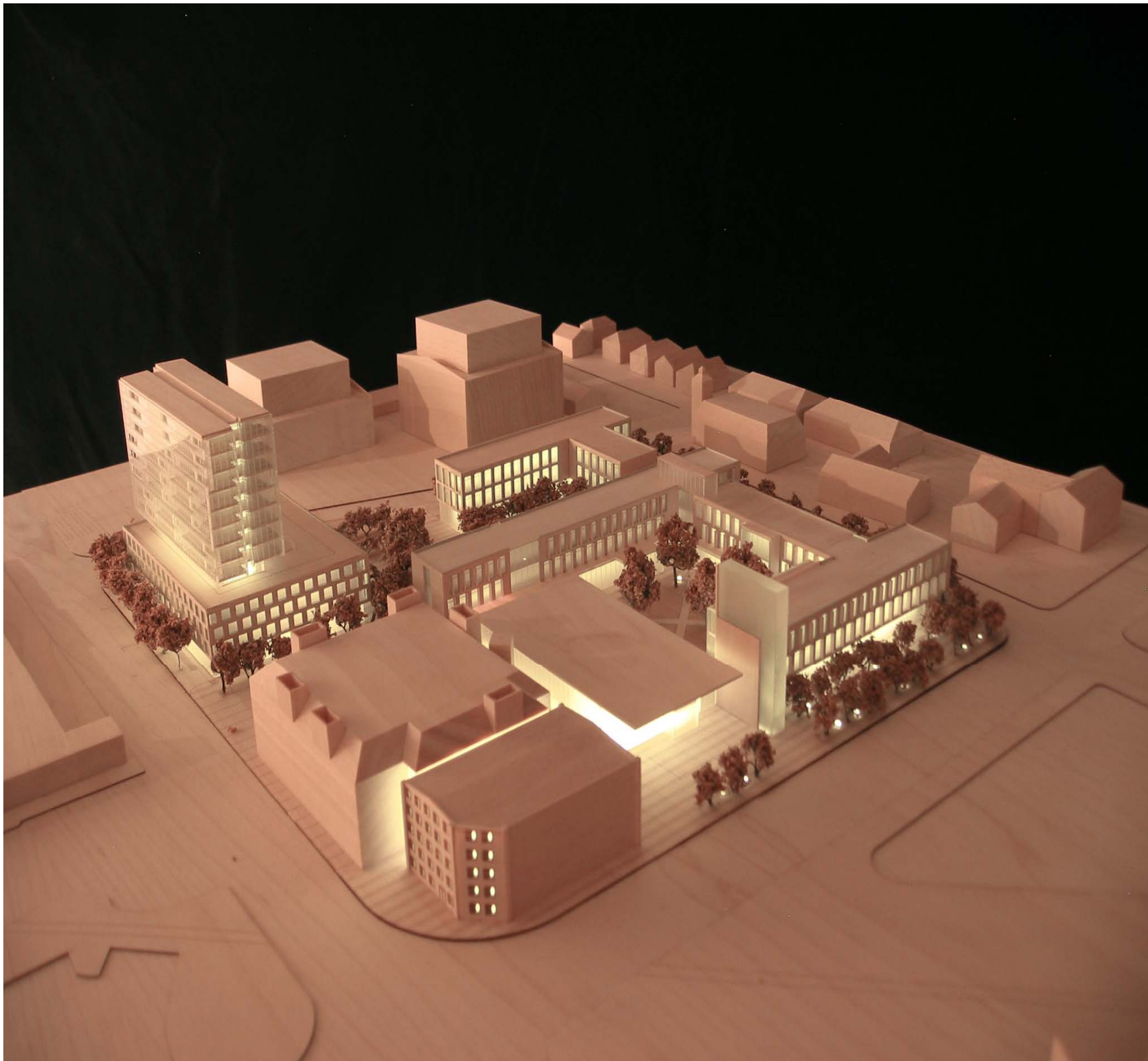
07 JANUARY 2009
1:250

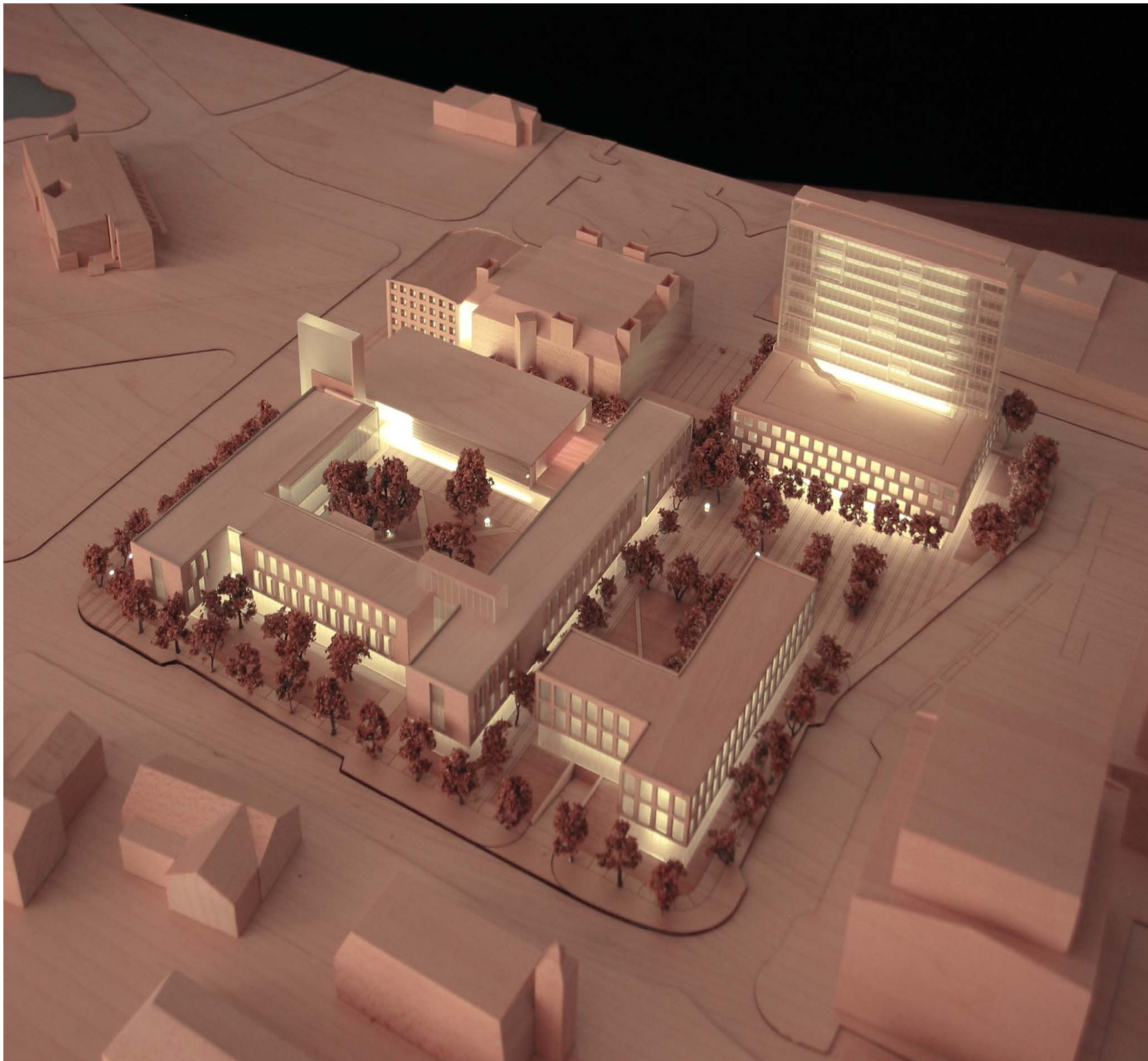


KPMB
Kuwabara Payne McKenna Blumberg Architects

322 King Street West
Toronto, Ontario
M5V 1J2
tel (416) 977-5104
fax (416) 598-9840









CLOSING REMARKS

- Appreciation
- Vision of the Balsillie Campus in 2015

